

Department of Engineering
Tim Bryan, P.E., PTOE, County Engineer

3137 South Liberty Street, Canton, MS 39046
Office (601) 855-5582 FAX (601) 859-5857

MEMORANDUM

October 4, 2024

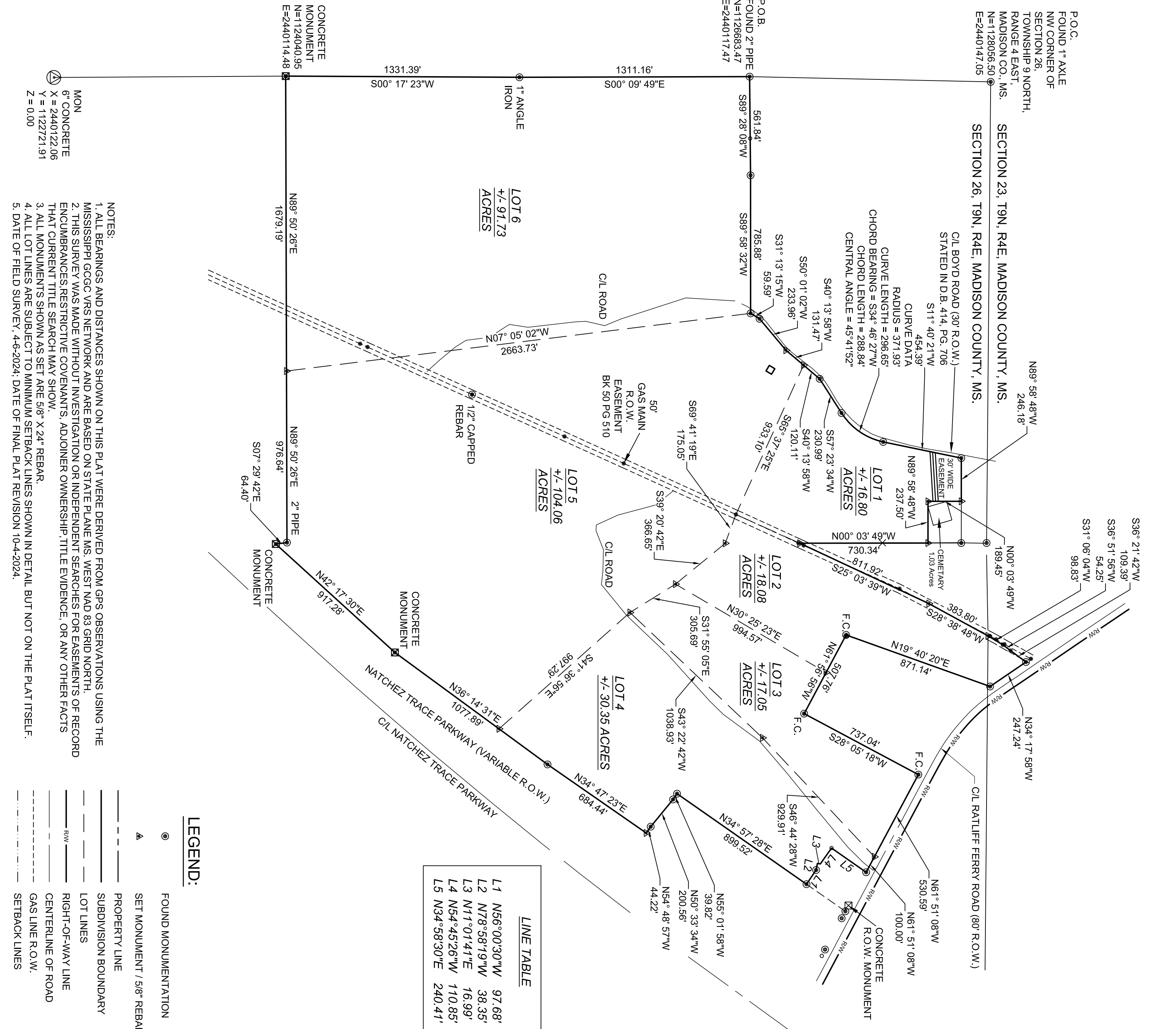
To: Casey Brannon, Supervisor, District I
Trey Baxter, Supervisor, District II
Gerald Steen, Supervisor, District III
Karl Banks, Supervisor, District IV
Paul Griffin, Supervisor, District V

From: Tim Bryan, P.E., PTOE
County Engineer

Re: Preliminary Plat
Ratliff Trace Farms Subdivision

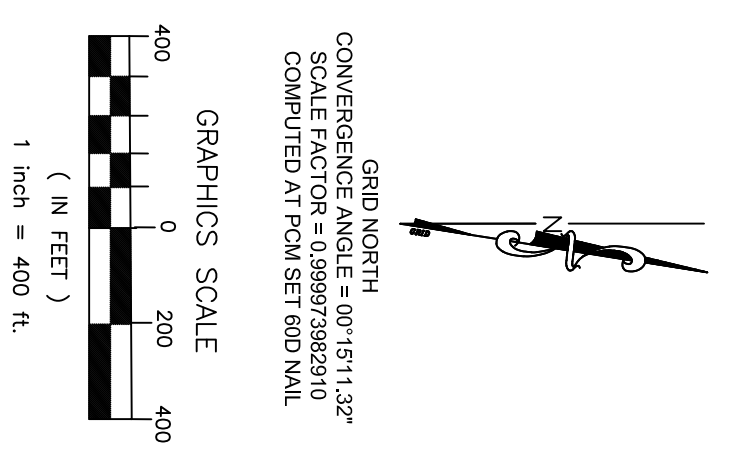
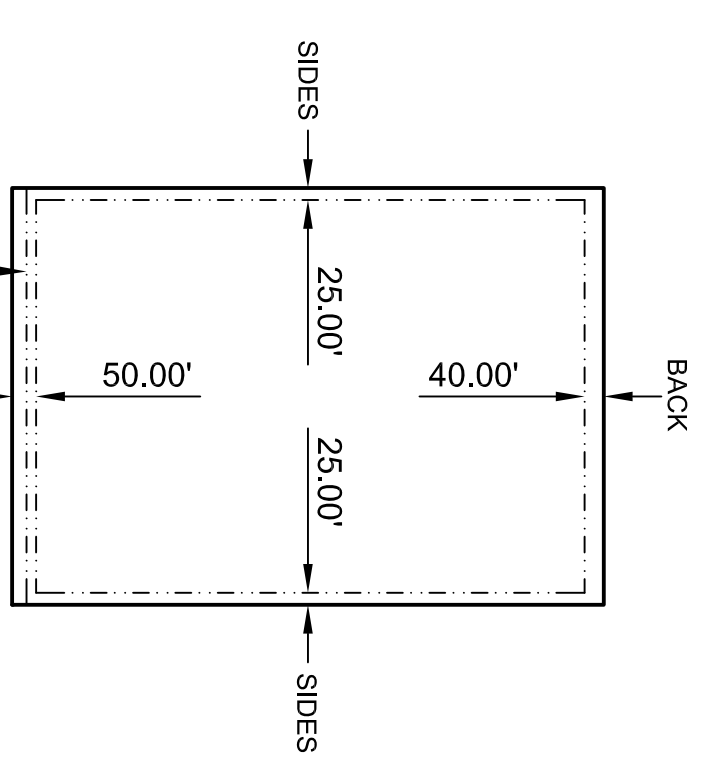
The Engineering Department recommends approval of the preliminary plat of Ratliff Trace Farms Subdivision. The development is 6 lots on approximately 277.54 acres. There is no public infrastructure associated with the development.

PRELIMINARY PLAT



RATLIFF TRACE FARMS SUBDIVISION

277.54 ACRES MORE OR LESS IN SECTIONS 23 AND 26,
T9N-R4E, MADISON CO. MS



RATLIFF TRACE FARMS SUBDIVISION	277.54 ACRES MORE OR LESS IN SECTIONS 23 AND 26, T9N-R4E, MADISON CO. MS
WILLIAM HARDY GROSS REGISTERED PROFESSIONAL LAND SURVEYOR PLS-31198 STATE OF MISSISSIPPI	PREPARED BY William Hardy Gross 203 N. White Street Carthage, MS 39051
DATE: 4/06/2024	JOB NO.:
SCALE: 1" = 400'	SHEET: 1/2

I certify that this survey was actually made on the ground as per record description and is correct to the best of my knowledge.

DRAWN BY: WHG

CHECKED BY: WHG